

Data sheet

Steel Pressure Sensor

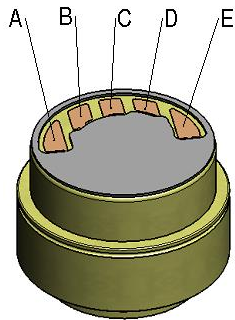
GFS Gesellschaft für Sensorik mbH
Grubenstr. 2
D-78052 Villingen Schwenningen

8mm pressure sensing element

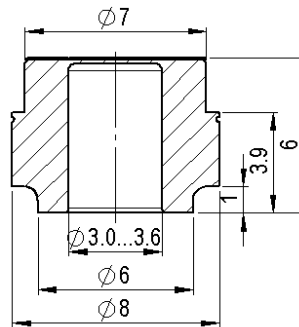
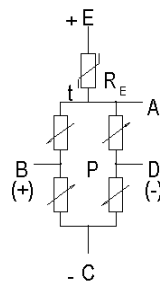
Tel: +49(0) 77 21/ 8475-0
Fax: +49(0) 77 21/ 8475-75
Web: www.GFSGermany.de

Specs of 8mm pressure sensing element

Diameter 8 mm:



Schema



Sensor: Thin film on steel

Pressure range: 40; 100; 200; 250; 400; 600 bar

Inner diameter is standard 3,6 mm.

Electrical Data:

-Signal output: 14...28mV (10 VDC)

-Electrical strength: 500V DC and 250 VAC

-Supply voltage: 10VDC, max 15VDC

-Bridge resistance: 6k Ω , \pm 30%

Accuracy: (not guaranteed, because unknown further processing)

-NLH @25°C (BSL through 0): 0,2 % FS typically

-Long term stability by using: \pm 0.2% FS/12 month typ.

Environmental conditions:

-Media temperature: -40...+125°C

-Humidity: max. 95% rel.

Mechanical data:

-sensor: 1.4542 (AISI 630)

The electrical contacts consist of a bondable thinfilm Nickel-Pads. Pitch 1/20 "