

# Data sheet

## Thin Film on Steel Pressure Sensor

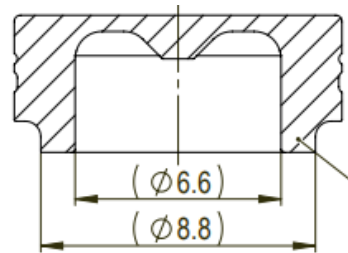
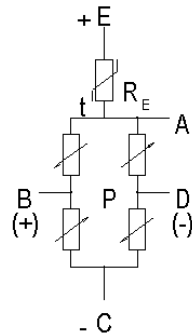
### 10,5 mm pressure sensing element

GFS Gesellschaft für Sensorik mbH  
 Grubenstr. 2  
 D-78052 Villingen Schwenningen  
 Tel: +49(0) 77 21/ 8475-0  
 Fax: +49(0) 77 21/ 8475-75  
 Web: www.GFSGermany.de

Specs of a 10,5 mm pressure sensing element

Diameter 10,5 mm:

Schema



Sensor: Thin film on steel

Pressure range: 6, 10, 16, 25, 40; 60, 100; 250 bar

Electrical Data:

-Signal output: 14...28mV (10 VDC)

-Electrical strength: 250V DC

-Supply voltage: 10VDC, max 15VDC

-Bridge resistance: 6k $\Omega$ ,  $\pm$ 30%

Accuracy: (not guaranteed, because unknown further processing)

-NLH @25°C (BSL through 0): 0,3 % FS typically

-Long term stability by using:  $\pm$ 0.2% FS/12 month typ.

Environmental conditions:

-Media temperature: -40...+125°C

-Humidity: max. 95% rel.

Mechanical data:

-sensor: 1.4542 (AISI 630)

The electrical contacts consist of a bondable thinfilm Nickel-Pads.